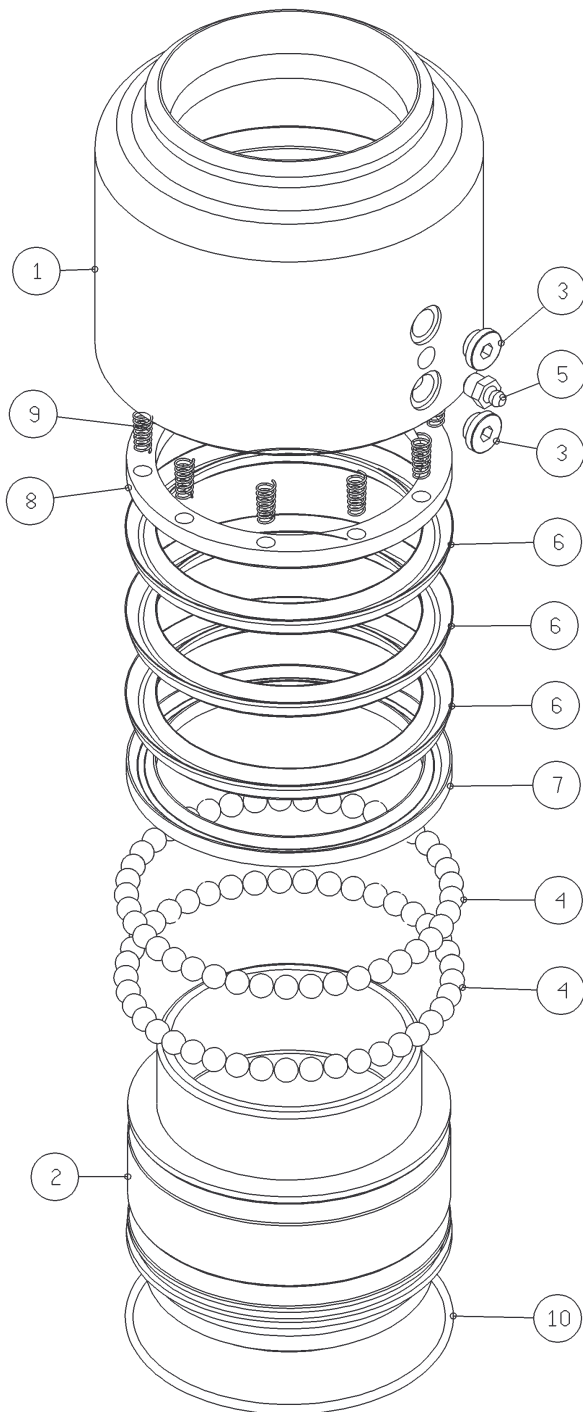
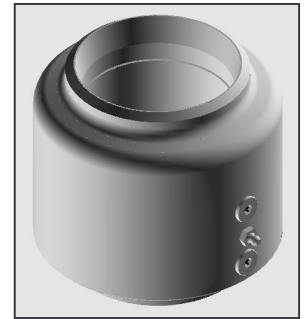
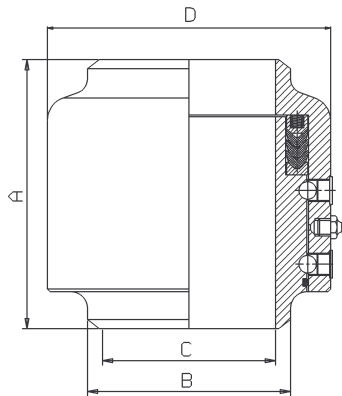




# SNODO GIREVOLE Tp.2174 2174 Mod. SWIVEL JOINT



## Dimensioni primarie / Dimensions



Size	A	B	C	D	Kg	Design Pressure
1"	96.5	33.4	26.5	62	2.1	40 Bar
1.1/2"	115	48.3	40	85	2.7	40 Bar
2"	115	60.3	51	94	3.2	40 Bar
2.1/2"	125	73	63	113	5.2	40 Bar
3"	139.5	88.9	78	124	6	40 Bar
4"	146	114.3	102	156	9.8	40 Bar
6"	216.5	168.3	152	225	26.6	10 Bar
8"	249	219.1	202.5	290	49.2	10 Bar

### Note / Remark

- Superfici di rotolamento temperate per induzione e rettificate.
- Induction hardened and grinded ball bearing raceways.

Part.	Description	Q.ty	Material
1	Corpo dello snodo <i>Body</i>	1	Acc. Carbonio <i>Carbon Steel</i>
2	Maschio <i>Sleeve</i>	1	Acc. Carbonio <i>Carbon Steel</i>
3	Tappi fermo sfere <i>Ball plugs</i>	2	AISI 303
4	Sfere <i>Balls</i>		Acc. Carbonio <i>Carbon Steel</i>
5	Ingrassatore <i>Grease nipple</i>	1	Acc. Carbonio <i>Carbon Steel</i>
6	Guarnizioni a "V" <i>"V" ring seals</i>	3	BUNA N/VITON
7	Anello di appoggio <i>Female adapter</i>	1	Ottone <i>Brass</i>
8	Anello contropinta <i>Spring adapter</i>	1	Ottone <i>Brass</i>
9	Molle <i>Springs</i>		INOX
10	Anello ritegno grasso <i>Grease O'Ring</i>	1	BUNA N/VITON